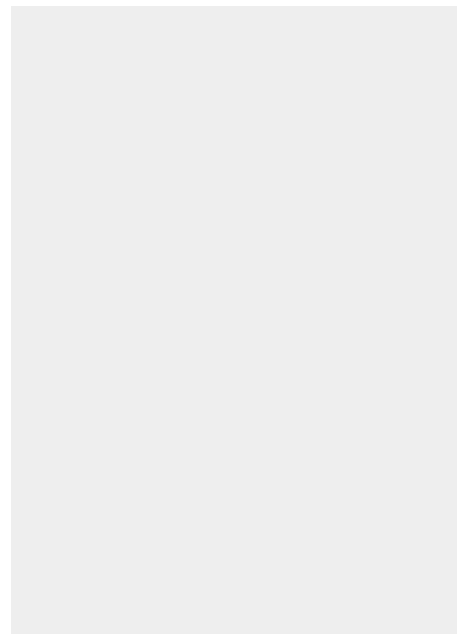
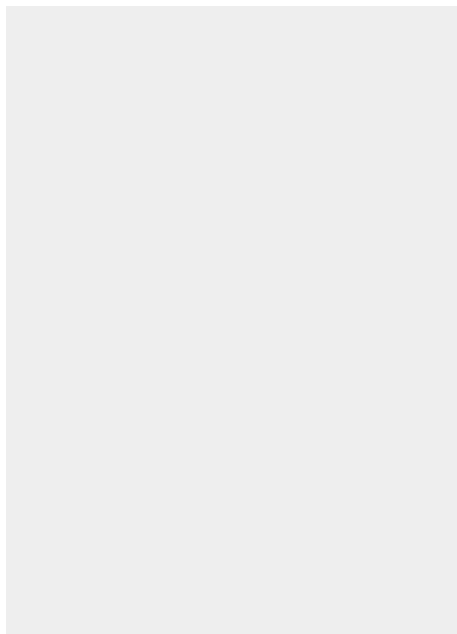


Fiche article : Hollow punch 1/4" or 6.4 mm - Référence :  
JLB1/4#

### HOLLOW PUNCH 1/4" OR 6.4 MM



**5,52 € excl. tax**  
**6,62 € incl. tax**



**Made in France**

**SKU:** JLB1/4# | **Categories:** [1/8" to 3/8" hollow punches](#) |

#### DESCRIPTION DU PRODUIT

Made of high resistance steel, the JLB model hollow punches ensure a precise cut-out of pallets and washers in soft materials : paper tape, foam, cardboard, leather, felt, cork, rubber, plastic, fabric...etc.

#### Compatibility

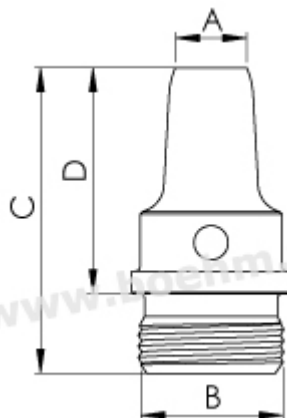
This hollow punch is screwed on following handles or chucks: JLBM10, JLBM20, JLBM30PA, JLBM50PA, JLBM60PA and JLBM100.

[See all our striking tools](#)

Fiche article : Hollow punch 1/4" or 6.4 mm - Référence :

JLB1/4#

**Other features:**



A=1/4" or 6.4 mm - B=M13 x 1 - C=27 - D=20

**Fastening method:** by screwing onto chuck, handle, or JLB model handle

**Twinning possibilities :** [see the twinning table](#)

For information on how to use these tools, please consult our [tutorials](#).



**Made in France**

Fiche article : Hollow punch 1/4" or 6.4 mm - Référence :  
JLB1/4#

## INFORMATIONS COMPLÉMENTAIRES

<b>Weight</b>	0,01 kg
<b>Diameter in mm</b>	<a href="#">6.40 mm</a>

Fiche article : Hollow punch 1/4" or 6.4 mm - Référence :  
JLB1/4#