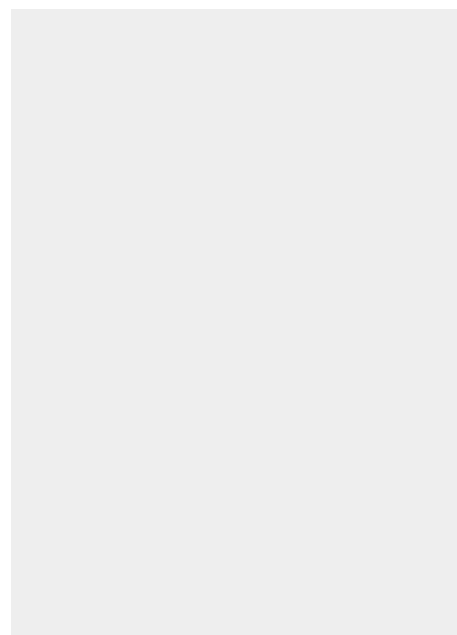
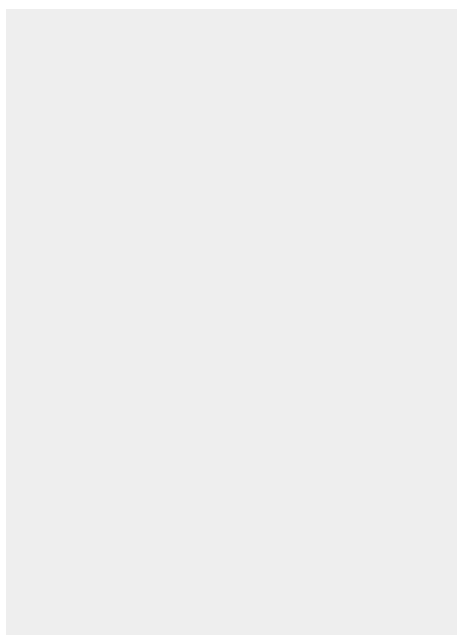


Fiche article : Hollow punch 1/8" or 3.2 mm - Référence :

JLB1/8#

HOLLOW PUNCH 1/8" OR 3.2 MM



5,52 € excl. tax
6,62 € incl. tax



Made in France

SKU: JLB1/8# | **Categories:** [1/8" to 3/8" hollow punches](#) |

DESCRIPTION DU PRODUIT

Made of high resistance steel, the JLB model hollow punches ensure a precise cut-out of pallets and washers in soft materials : paper tape, foam, cardboard, leather, felt, cork, rubber, plastic, fabric...etc.

Compatibility

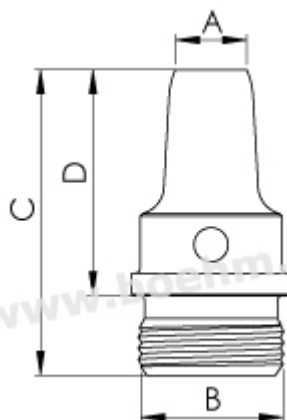
This hollow punch is screwed on following handles or chucks: JLBM10, JLBM20, JLBM30PA, JLBM50PA, JLBM60PA and JLBM100.

[See all our striking tools](#)

Fiche article : Hollow punch 1/8" or 3.2 mm - Référence :

JLB1/8#

Other features:



A=1/8" ou 3.2 mm - B=M13 x 1 - C=27 - D=20

Fastening method: by screwing onto chuck, handle, or JLB model handle

Twining possibilities : [see the twining table](#)

For information on how to use these tools, please consult our [tutorials](#).



Made in France

Fiche article : Hollow punch 1/8" or 3.2 mm - Référence :
JLB1/8#

INFORMATIONS COMPLÉMENTAIRES

Weight	0,01 kg
Diameter in mm	3.20 mm

Fiche article : Hollow punch 1/8" or 3.2 mm - Référence :
JLB1/8#