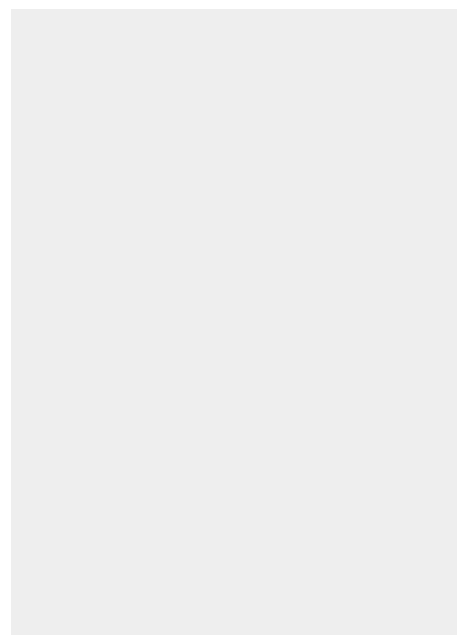
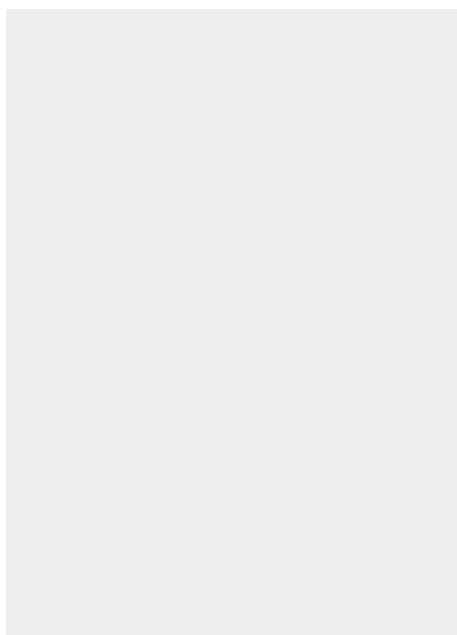


Fiche article : Hollow punch 3/8" or 9.5 mm - Référence :  
JLB3/8#

### HOLLOW PUNCH 3/8" OR 9.5 MM



**5,69 € excl. tax**  
**6,83 € incl. tax**



**Made in France**

**SKU:** JLB3/8# | **Categories:** [1/8" to 3/8" hollow punches](#) |

#### DESCRIPTION DU PRODUIT

Made of high resistance steel, the JLB model hollow punches ensure a precise cut-out of pallets and washers in soft materials : paper tape, foam, cardboard, leather, felt, cork, rubber, plastic, fabric...etc.

#### Compatibility

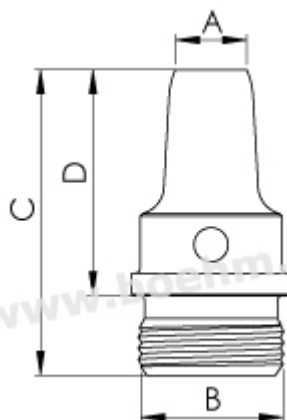
This hollow punch is screwed on following handles or chucks: JLBM10, JLBM20, JLBM30PA, JLBM50PA, JLBM60PA and JLBM100.

[See all our striking tools](#)

Fiche article : Hollow punch 3/8" or 9.5 mm - Référence :

JLB3/8#

**Other features:**



A=3/8" ou 9.5 mm - B=M13 x 1 - C=27 - D=20

**Fastening method:** by screwing onto chuck, handle, or JLB model handle

**Twinning possibilities :** [see the twinning table](#)

For information on how to use these tools, please consult our [tutorials](#).



**Made in France**

Fiche article : Hollow punch 3/8" or 9.5 mm - Référence :  
JLB3/8#

### INFORMATIONS COMPLÉMENTAIRES

**Weight** 0,01 kg

**Diameter in mm** [9.50 mm](#)

Fiche article : Hollow punch 3/8" or 9.5 mm - Référence :  
JLB3/8#

Fiche article : Hollow punch 3/8" or 9.5 mm - Référence :  
JLB3/8#