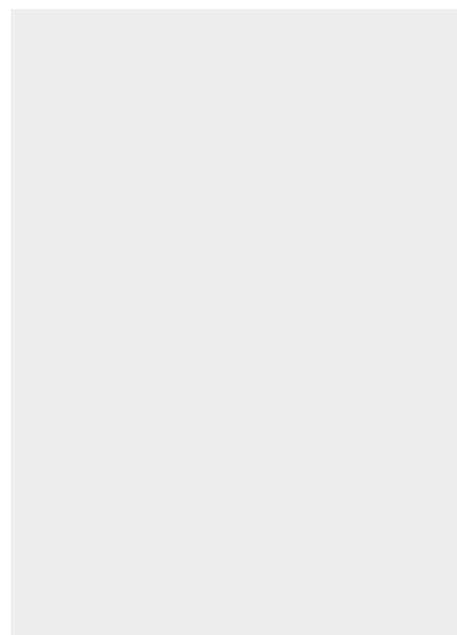
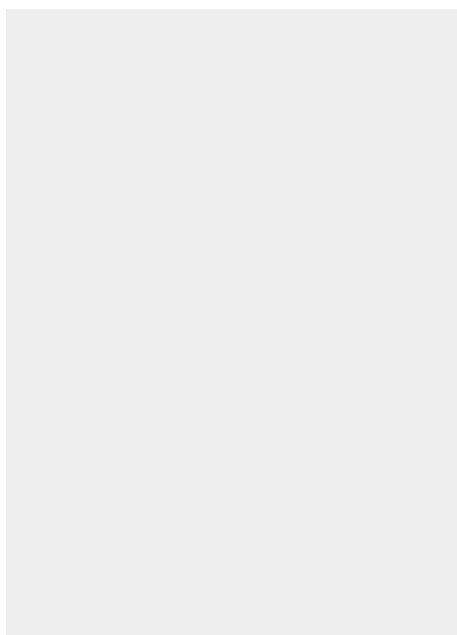


Fiche article : Hollow punch 9/32" or 7.1 mm - Référence :

JLB9/32#

HOLLOW PUNCH 9/32" OR 7.1 MM



5,69 € excl. tax
6,83 € incl. tax



Made in France

SKU: JLB9/32# | **Categories:** [1/8" to 3/8" hollow punches](#) |

DESCRIPTION DU PRODUIT

Made of high resistance steel, the JLB model hollow punches ensure a precise cut-out of pallets and washers in soft materials : paper tape, foam, cardboard, leather, felt, cork, rubber, plastic, fabric...etc.

Compatibility

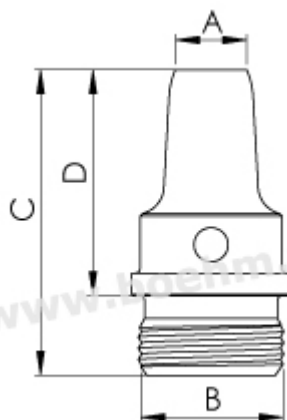
This hollow punch is screwed on following handles or chucks: JLBM10, JLBM20, JLBM30PA, JLBM50PA, JLBM60PA and JLBM100.

[See all our striking tools](#)

Fiche article : Hollow punch 9/32" or 7.1 mm - Référence :

JLB9/32#

Other features:



A=9/32" or 7.1 mm - B=M13 x 1 - C=27 - D=20

Fastening method: by screwing onto chuck, handle, or JLB model handle

Twining possibilities : [see the twining table](#)

For information on how to use these tools, please consult our [tutorials](#).



Made in France

Fiche article : Hollow punch 9/32" or 7.1 mm - Référence :
JLB9/32#

INFORMATIONS COMPLÉMENTAIRES

Weight 0,01 kg

Diameter in mm [7.10 mm](#)

Fiche article : Hollow punch 9/32" or 7.1 mm - Référence :
JLB9/32#

Fiche article : Hollow punch 9/32" or 7.1 mm - Référence :
JLB9/32#